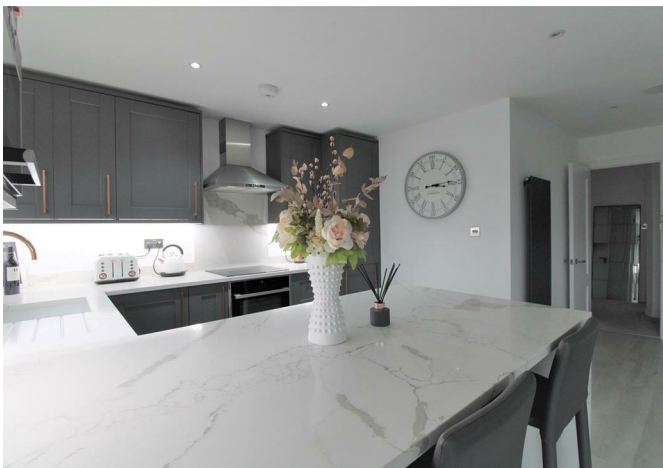


ALLDAY
& MILLER



Windmill Hill, Ruislip, HA4 8PX
£415,000

2 1 1 E



Windmill Hill, Ruislip, HA4 8PX

£415,000

- Stunning Maisonette
- Short Walk To Ruislip & Ruislip Manor Train Station
- State of The Art Inclusions
- Garage
- Available With No Chain
- Two Double Bedrooms
- Designer Kitchen & Bathroom
- Lease In Excess of 160 Years
- Balcony / Outside Space
- First Floor

Description

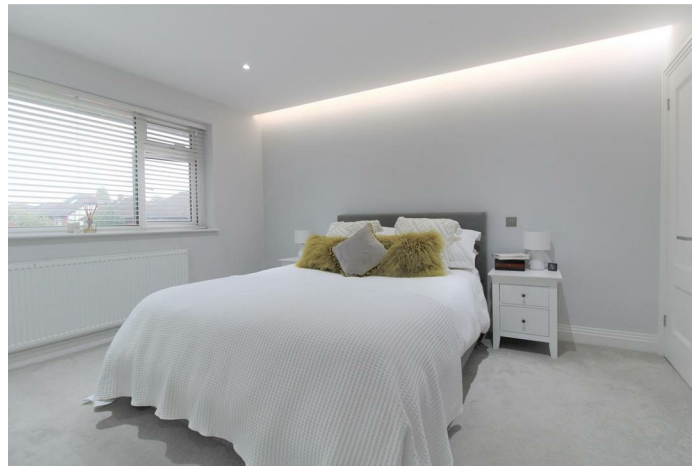
The accommodation comprises of a entrance hallway leading up to a large open plan living and dining room with a sleek modern kitchen with integrated appliances, two large double bedrooms with fitted wardrobes to the master and designer shower room.

Outside

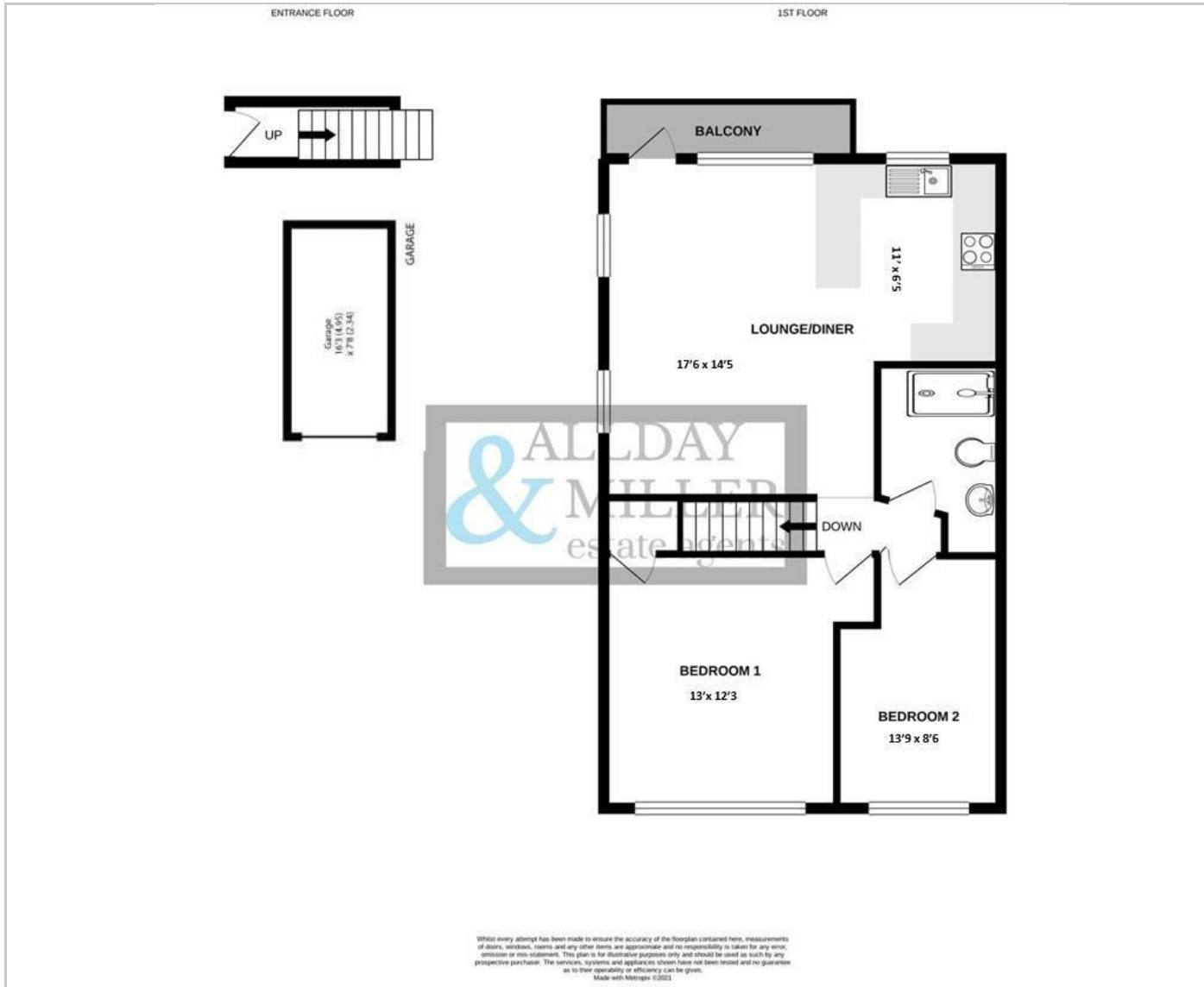
Well kept communal garden surround the property with access to the side of the building leading to the allocated parking space. Further more there is a private balcony

Situation

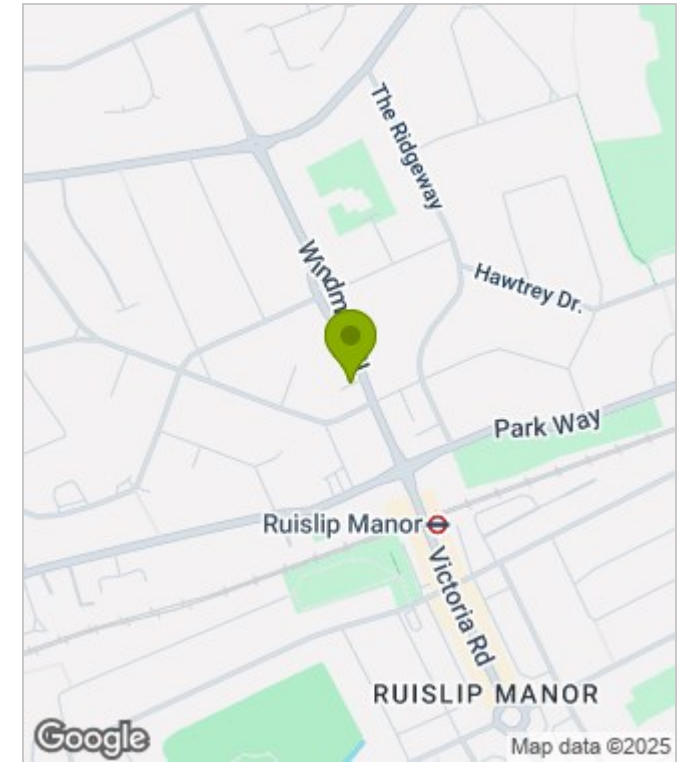
Windmill Hill is perfectly positioned in Ruislip Manor just moments from the High Street and its multitude of shops, restaurants,, bus links a and Metropolitan/Piccadilly line train station. There are a number of popular local schools within close proximity including Warreneder primary school and Bishop Ramsey senior school. The A40/M40 and M4 are a short drive away offering access to London, Heathrow and the Home Counties.



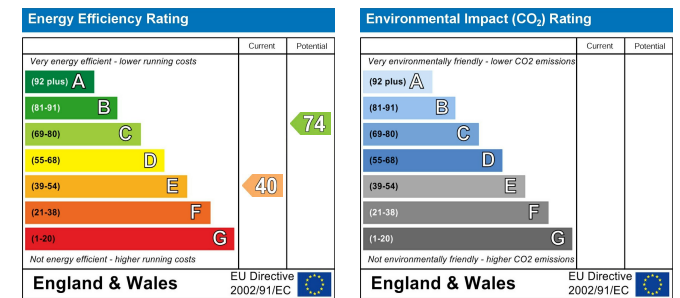
Floor Plans



Area Map



Energy Performance Graph



These particulars, whilst believed to be accurate are set out as a general outline only for guidance and do not constitute any part of an offer or contract. Intending purchasers should not rely on them as statements of representation of fact, but must satisfy themselves by inspection or otherwise as to their accuracy. No person in this firm's employment has the authority to make or give any representation or warranty in respect of the property.

www.alldayandmiller.co.uk

192 High Street, Uxbridge, Middlesex, UB8 1LB

T: 01895 641 000 | E: sales@alldayandmiller.co.uk
T: 01895 379 549 | E: lettings@alldayandmiller.co.uk